

Overcoming Challenges in the ZED-2 Reactor Safety Analysis

TRTR Conference

G.B. Wilkin and K.R. Kumar

2010 September 19-24

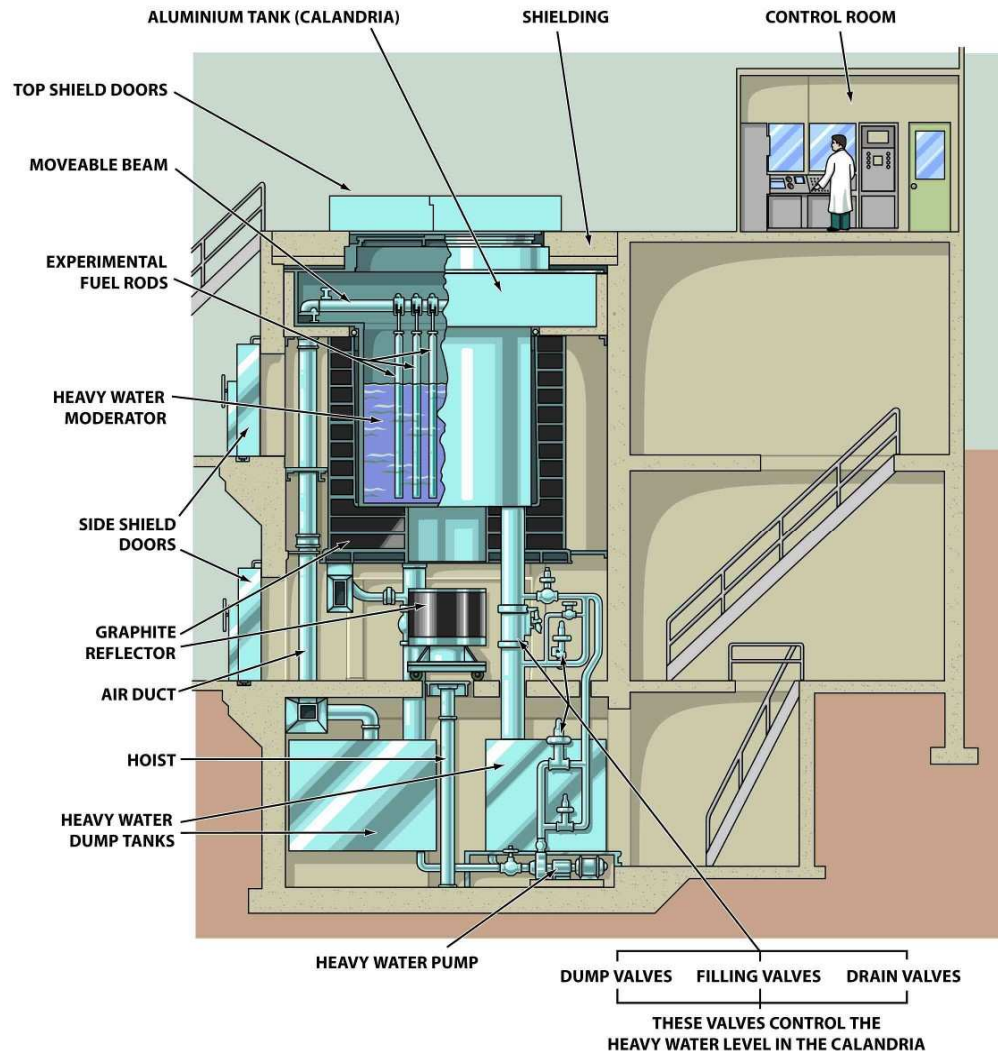


UNRESTRICTED / ILLIMITÉ

ZED-2 50th Anniversary

- First criticality on 1960 September 7
- 50 years of safe operation achieved two weeks ago
- CNS sponsoring a Technical Workshop on critical facilities and small reactors
 - 2010 November 1-3, Ottawa, Ontario, Canada
 - CNS website: <http://www.cns-snc.ca/events>
 - Still accepting registrations
 - Tour of ZED-2 on November 3 at CRL

ZED-2 Overview

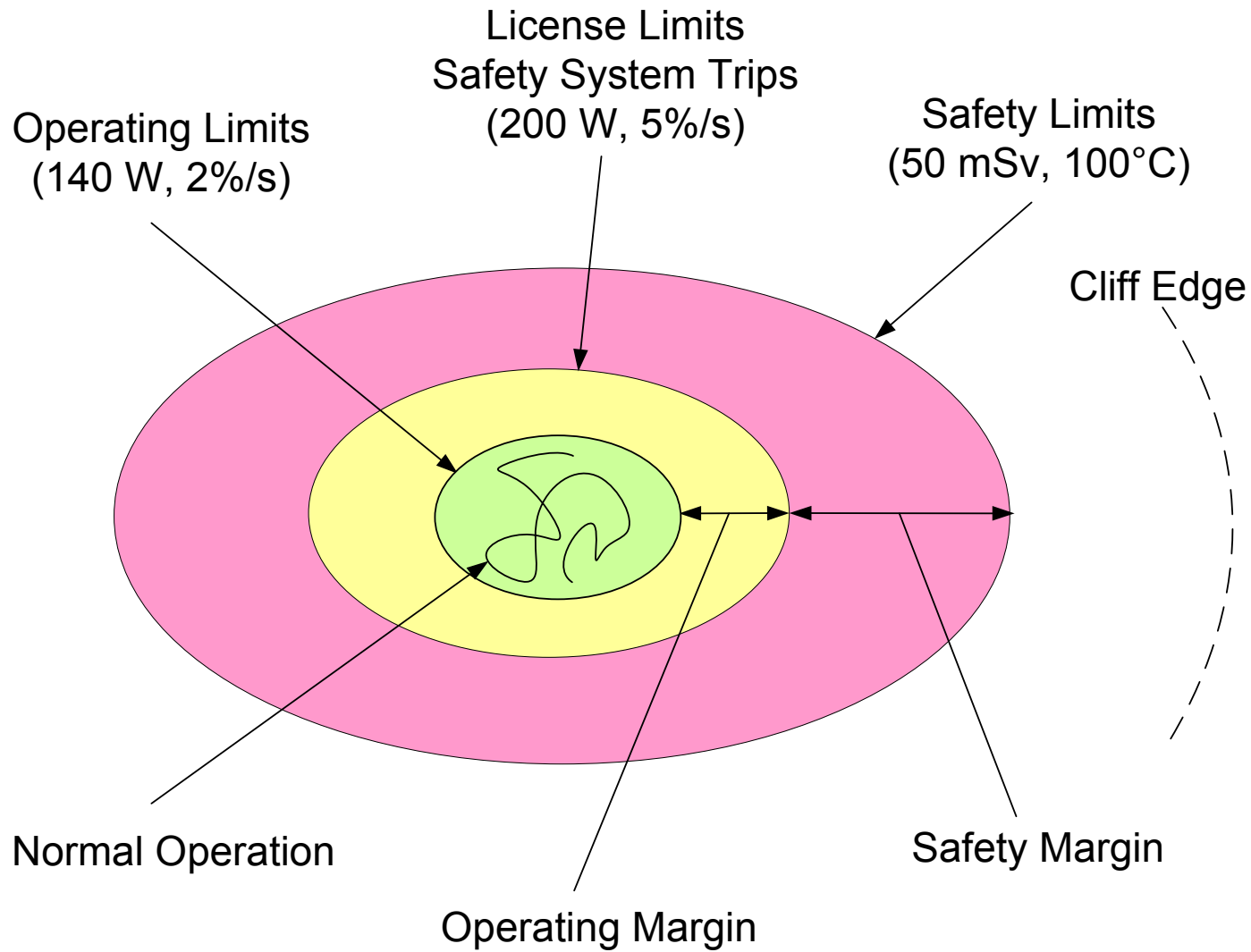


- Cylindrical vessel in which fuel rods are hung vertically
- Pump D_2O moderator into vessel to take reactor critical
- Low power, ~200 W maximum
- Primary shutdown mechanism is moderator dump through 3 lines (1.5 ft dia) back to the dump tanks in the basement
- 8 to 12 standby absorber rods also drop but are not credited in the safety case

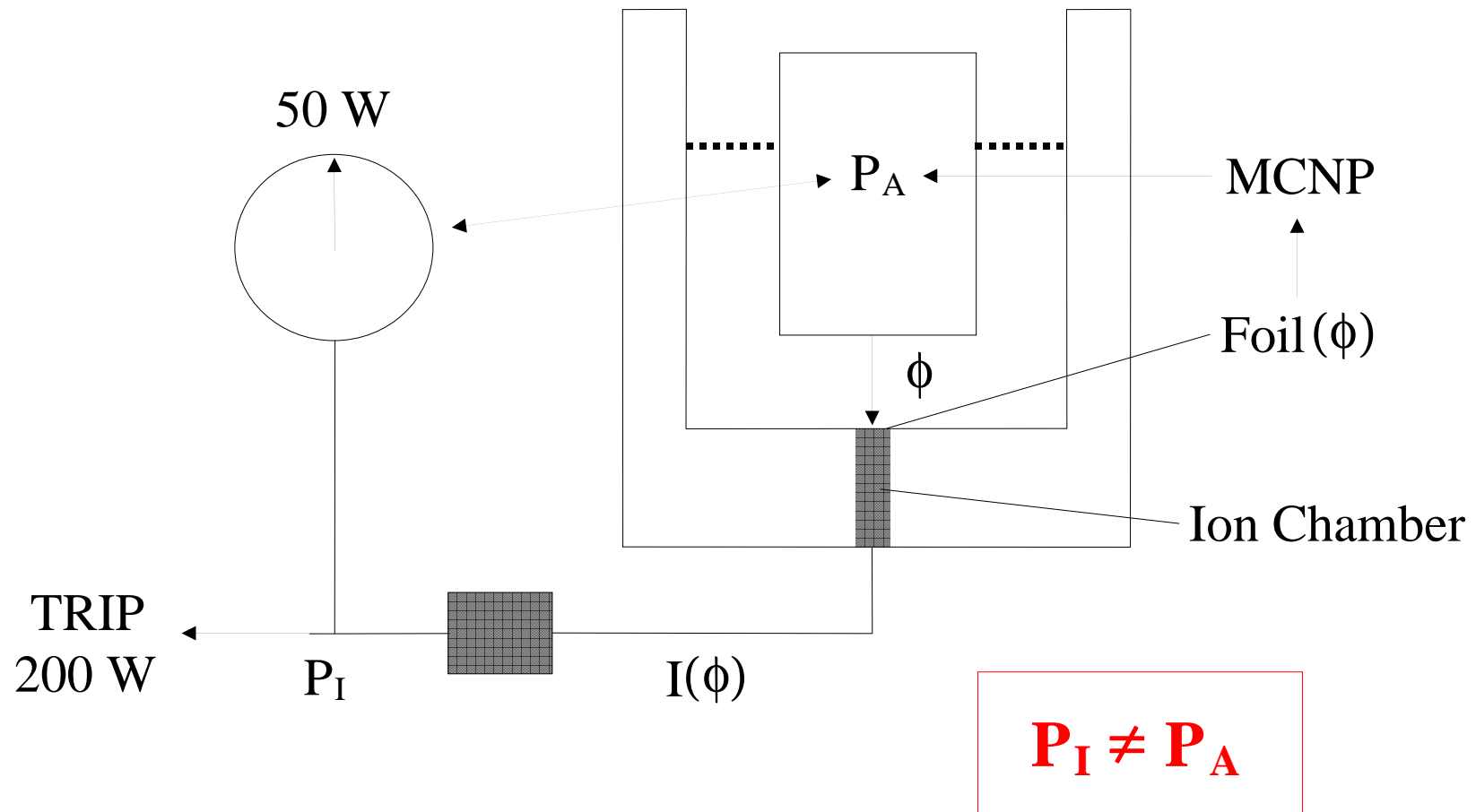
ZED-2's Versatility & Variability

- Can accommodate mixed fuel types in a variable number of fuel rods each with or without CANDU-type or ACR-type channels
- Channel coolants can be light or heavy water, or air, and can vary from channel to channel
 - Some CANDU-type channels can be heated
- Lattices can be square or hexagonal with continuously variable lattice pitch
- Other items can also be placed in the core such as
 - Solid neutron absorbers, self-powered and foil-activation neutron flux detectors, and soluble neutron poisons in the heavy water
- Heavy water purity continuously decreases with time

Defence in Depth



Indicated versus Actual Core Power



ACR LEU Fuel Lesson

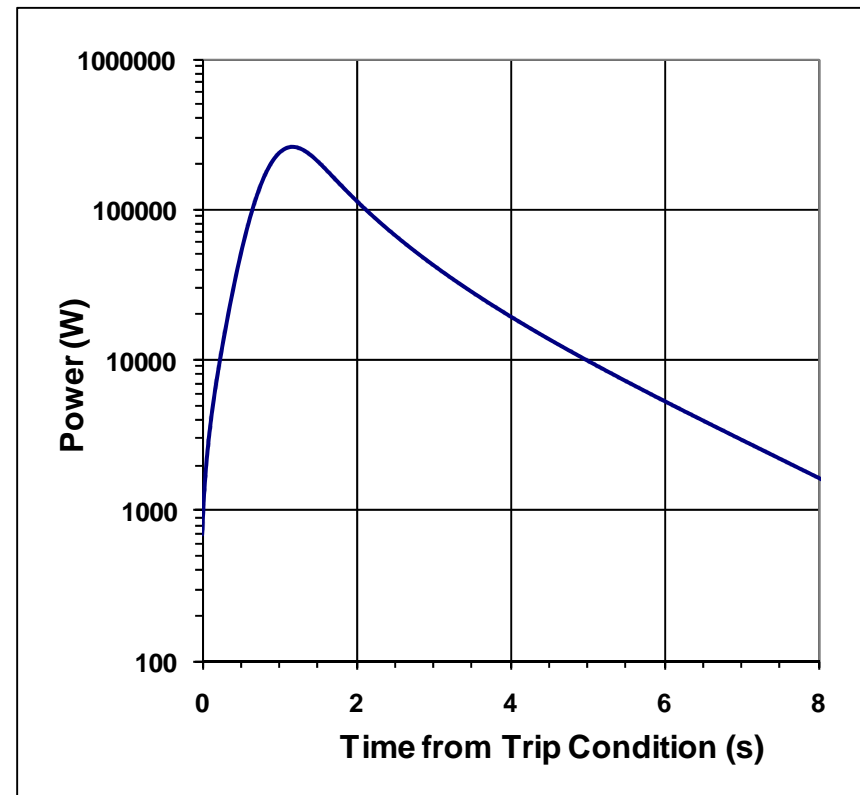
- Addendum added to the ZED-2 **FSAR** to accommodate LEU fuel for ACR experiments
 - **Final Safety Analysis Report (supports the license)**
- Limits placed on LEU fuel loading, minimum lattice pitch, and maximum reactivity insertion
- Did not include indicated-to-actual power difference
 - When the power difference was assessed, the safety case failed for smallest allowed lattice pitch
 - ZED-2 was shut down by AECL management
 - Errant case “fixed” by reducing safety-case conservatism
 - Operation resumed under a 2nd addendum to FSAR
 - Special CNSC permission was required for each core load
- **Clearly a different approach was required to avoid endless revisions to the FSAR for new experiments**

Summary of Reasons for FSAR Upgrade

- Last major rewrite of FSAR in 1985
- Include and quantify safety margins
- Explicitly include impact of the difference between indicated and actual core power
- Include uncertainty analysis
- **Challenge: to select an appropriate set of controlled parameters that provides a robust safety case without compromising the facility's versatility while at the same time avoiding endless revisions to the FSAR**
- Many other upgrades performed at the same time
 - This presentation is confined to the safety analysis

Reference Accident Transient (Design Basis Accident – DBA)

- Indicated power is at the trip condition (200 W)
- Core parameters at their **LCO** limits
 - **Limiting Conditions for Safe Operation**
- Step reactivity insertion:
 $\rho = \beta(U235)+1 \text{ mk} = 7.984 \text{ mk}$
(1 mk = 10^{-3} k = 100 pcm)
- U235 is the only fissioning nuclide
- One dump valve fails to open and absorber rods are not credited
- Acceptance Criteria (dose to staff and fuel temperature) depend on total energy generated
- All other credible LOR accidents are bounded by this transient
- Other fissioning nuclides are bounded by this transient



Reference Transient and E_{AC} Equations (LCO Parameters)

$$\frac{dn(t)}{dt} = \frac{\rho(t) - \beta_{U235}}{\Lambda} n(t) + \sum_i \lambda_i C_i(t) \quad P(t) = P_A n(t), \quad n(0) = 1$$

$$\rho(t) = \rho_{IN}(t) + \rho_{OUT}(t) \quad \rho_{IN}(t) = \beta_{U235} + 1 \text{ mk, ramp } 0 \rightarrow 0.1 \text{ ms}$$

$$\rho_{OUT}(t) = -LCR \frac{H_{ex}^3}{2} \left[\frac{1}{(H_{ex} - \Delta h(t'))^2} - \frac{1}{H_{ex}^2} \right] \quad H_{ex} = H_c + D_{ex}$$

$$t' = t - t_{DUMP}$$

$$E = \int P(t) dt \quad E_{AC} = M F_{\Delta H} F_{flux\ peak} \Delta T C_P \quad \Delta T = 100^\circ\text{C} - T_0$$

$$E < E_{AC} \quad \leftarrow \text{Deposited Energy Acceptance Criterion}$$

LCO Parameters

- Set of 6 parameters were selected as LCOs
 - Based on reactor physics not physical parameters
 - The parameter values vary significantly with core loading and are calculated for each experiment
 - A limit is specified for each parameter
 - Maximum reactivity insertion:
 - $\rho = \beta_{\text{EXPT}} + 1 \text{ mk}$, limit: $\rho \leq \beta_{\text{U235}} + 1 \text{ mk}$
 - Safety case using U235 bounds other fissionable nuclides
 - Other 5 limits are fixed: LCR, fuel mass, critical height, neutron generation time, actual power at trip
 - e.g., $P_A < 700 \text{ W}$ at $P_I = 200 \text{ W}$ to address $P_A \neq P_I$
 - Limit values are arbitrary but carefully chosen to satisfy the E_{AC} yet not unduly constrain experiments

Fixed Parameters

- The remaining parameters have fixed values
 - Not calculated for each experiment
 - Some parameter values are selected to bound experiments with additional margin
 - Some parameters don't depend on the experiment
 - **Senior ZED-2 Physicist determines if any fixed parameters must be changed for a given experiment**
 - Requires new safety case and CNSC acceptance

Uncertainty Analysis

- Uncertainty analysis performed on DBA
 - All 6 LCO parameters at the license limits, including 1σ standard errors (highly unlikely)
 - Fixed parameters included added margins
- Result was that a 98.8% probability that the deposited energy will not exceed E_{AC}
- Very high probability that E_{AC} will not be exceeded at license limits

Quantifying Safety Margins

Case	Margin to E_{AC}	Actual Fuel Temp (°C)
Reference accident transient (at LCO limits)	6.1	56.68
Worst case assessed (ACR/LEU, 24 cm, Gd in D ₂ O)	233	50.07
Errant Addendum case (ACR/LEU, 18 cm)	257	50.06
Typical experiments (CANDU/ACR, NU/LEU, D ₂ O/H ₂ O)	400-1200	50.01-50.04

- Actual fuel T explicitly calculated during transient
 - Fuel T safety limit is 100°C (initial fuel T is 50°C)
- Quantifies the margins in typical experiments between the actual fuel T and the safety limit

Summary of New Safety Case

- Establishes Defense in Depth philosophy
 - Introduces operating and safety margins
- Quantifies the very large actual safety margin
- Robust without compromising ZED-2 versatility
 - Can accommodate virtually any core loading without requiring a revision and CNSC approval of the licensing documents
- Addresses all other shortcomings in previous safety case
 - Includes a rigorous uncertainty analysis
 - Explicitly accounts for indicated-actual power discrepancy
 - Evidence provided that the DBA is in fact bounding

Thank You!

 **AECL EACL**



Reference Transient is Bounding (Reactivity Inserted and Rate)

Reactivity Inserted $\beta(\text{U235})=6.984$	Starting Indicated Power (W)	Deposited Energy (kJ)	Time to Trip (s)
7.984 mk, step (reference)	200	412	0
	120	277	0.02
	0.0001	91.9	2.28
2 mk, step (~5%/s period)	200	2.86	0
	120	3.03	1.65
	0.0001	15.3	267
0.495 mk/s (fastest LOR)	120	4.05	4.06
	0.0001	46.3	15.4
0.002 mk/s (slowest LOR)	120	92.1	176
	0.0001	19.9	869

Reference Transient is Bounding (Fissioning Nuclides)

Kinetics Parameters	Reactivity Limit (mk, step)	Starting Indicated Power (W)	Deposited Energy (kJ)
$\beta(\text{U235})=6.984$	7.984 (reference)	200	412
		120	277
		0.0001	91.9
$\beta(\text{Pu239})=2.28$	3.28	200	39.1
		120	28.9
		0.0001	15.1
$\beta(\text{Nat-U})=7.36$	7.984	200	171
		120	112
		0.0001	25.3

Reference Transient is Bounding (Actual Power at Trip)

- Actual power at trip (200 W indicated power):

$$P(W) = F7 \times \frac{202.5}{180.9} \times 4.554 \times 10^7 \times \frac{200}{50} \times \frac{1}{F2} \times 1.602 \times 10^{-13}$$

Nuclide	Total MeV/fiss (EPRI-NP-1771)	Prompt MeV/fiss (MCNP F7)	Ratio (±0.001)
U235	202.5	180.9	1.119
Pu239	207.0	189.4	1.093
Pu241	210.7	189.0	1.115
U233	198.0	180.8	1.095
U238	206.0	181.3	1.136
Nat-U	202.7	180.9	1.120

Note: 12.5% (1σ) standard error assigned to P

Prompt Neutron Generation Time (called $1/v$ insertion method or α -static method)

- From static perturbation theory

$$\Lambda = \frac{\left(\Phi^*, \frac{1}{v} \Phi \right)}{\left(\Phi^*, F \Phi \right)} \quad \text{and} \quad \Delta\rho = -\frac{\left(\Phi^*, \Delta M \Phi \right)}{\left(\Phi^*, F \Phi \right)}$$

- Setting $\Delta M = \Delta\alpha/v$ and solving for Λ yields

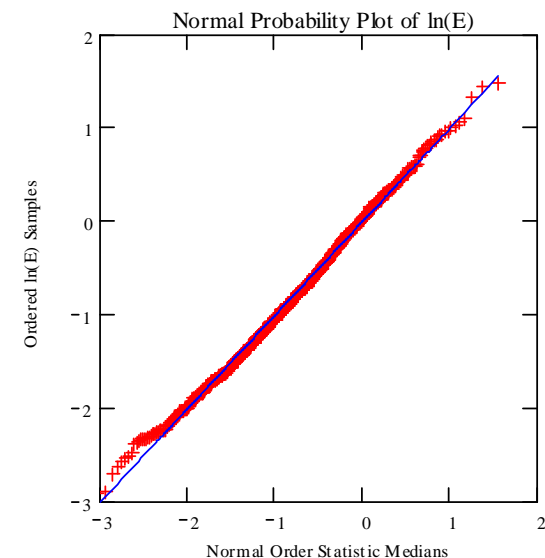
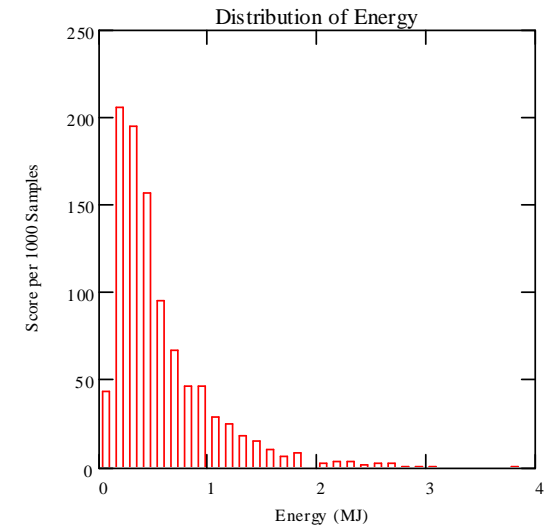
$$\Lambda = \lim_{\Delta\alpha \rightarrow 0} \left(-\frac{\Delta\rho}{\Delta\alpha} \right) = -\left(\frac{\partial\rho(\alpha)}{\partial\alpha} \right)_{\alpha=0}$$

- MCNP4C ACODE option is used to calculate several values of $\rho(\alpha)$ by repeatedly solving k -eigenvalue equation with α constant:

$$\frac{1}{k} F \Phi = \left[M + \frac{\alpha}{v} \right] \Phi$$

Uncertainty Analysis

- 17 input parameters set at reference values: Λ , ρ_{IN} , P_A , LCR , H_C , $(\beta_i, \lambda_i, i=1,6)$, each with a 1σ uncertainty
 - Uncertainty in M is included in the E_{AC}
 - Remaining parameters at their fixed values
- Repeatedly solve transient randomly sampling all 17 distributions each time
- Produces a log-normal distribution
 - linear normal probability plot of $\ln(E)$, $R=0.9983$
- 98.8% of the $\ln(E)$ distribution is less than $\ln(E_{AC})$
- Very high confidence that E_{AC} will not be exceeded in the DBA with all parameters at their LCO limits or fixed values, including uncertainties and margins



Fixed Parameters

$$\frac{dn(t)}{dt} = \frac{\rho(t) - \beta_{U235}}{\Lambda} n(t) + \sum_i \lambda_i C_i(t) \quad P(t) = P_A n(t), \quad n(0) = 1$$

$$\rho(t) = \rho_{IN}(t) + \rho_{OUT}(t) \quad \rho_{IN}(t) = \beta_{U235} + 1 \text{ mk, ramp } 0 \rightarrow 0.1 \text{ ms}$$

$$\rho_{OUT}(t) = -LCR \frac{H_{ex}^3}{2} \left[\frac{1}{(H_{ex} - \Delta h(t'))^2} - \frac{1}{H_{ex}^2} \right] \quad H_{ex} = H_c + D_{ex}$$

$$t' = t - t_{DUMP}$$

$$E = \int P(t) dt \quad E_{AC} = M F_{\Delta H} F_{flux\ peak} \Delta T C_P \quad \Delta T = 100^\circ\text{C} - T_0$$

$$E < E_{AC}$$