



Oregon State
University

Reactor Power Detector Shadowing Effects and the Possibility of Violating Licensed Reactor Power Limits

Tracey Spoerer, Dr. Steve Reese

June 19th, 2022



Previous Work

- Previous work at Oregon State [1] sought to determine cause of disagreement between measured and calculated reactivity worth of control rods at BOL in 2008.
- OSTR MCNP® model had low reactivity bias of 0.07 ± 0.04 at beginning of core life. However, measurements and calculations of some rods disagreed.
- Believed that neutronic shadowing effects were influencing the response of the fission chamber power detector by causing an under response in certain situations.



Previous Work

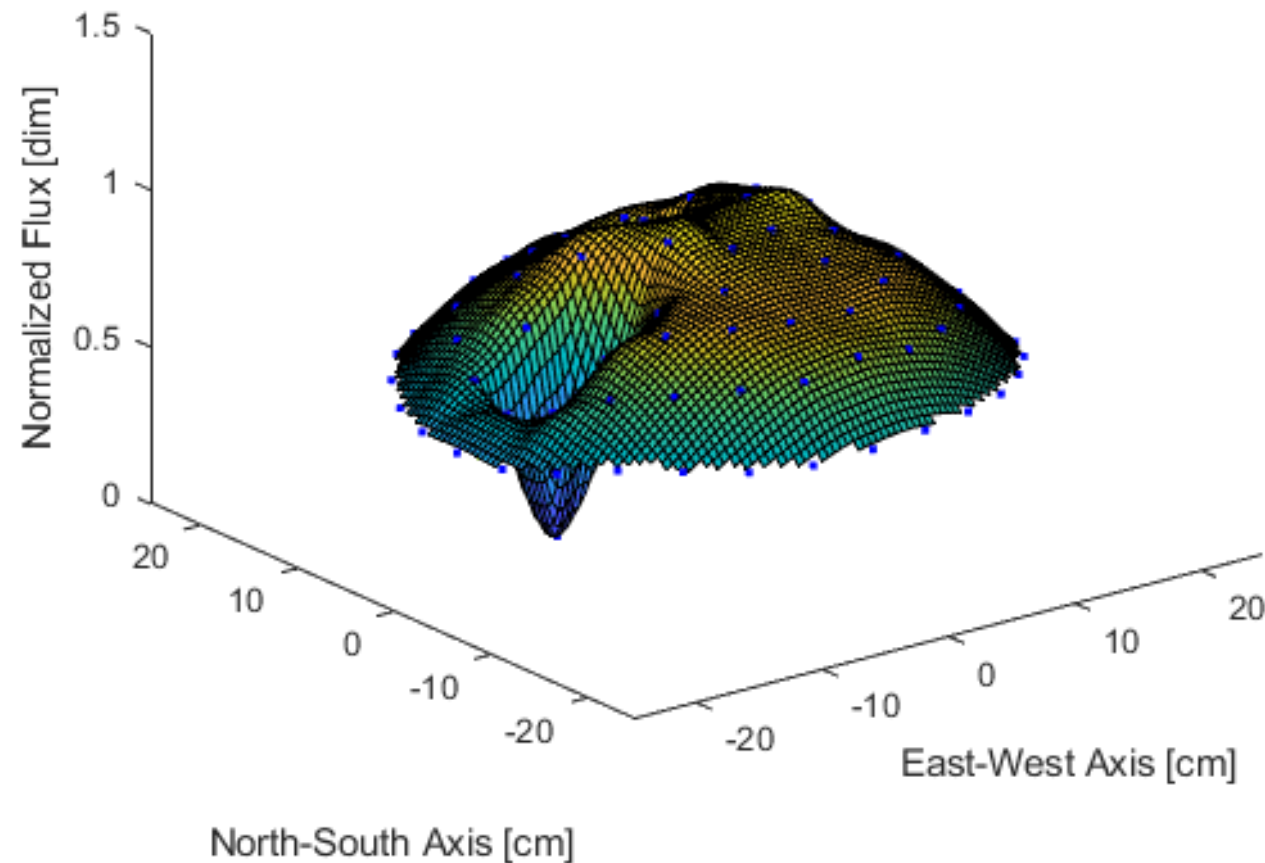
- Calculations are purely k_{eff} of system. Measurements are time of power rise at low powers using the fission chamber power detector.
- Found that neutronic shadowing of the fission chamber is negligible compared to actual control rod shadowing effects where rod worths are a function of the position of the others.
- Also found that flux tilts in skewed control rod configurations or heights can be a significant departure from normal flux distributions.

Thermal Flux Maps



Oregon State University
College of Engineering

Normal Core Thermal Flux Distribution, Shim Rod Pull 1





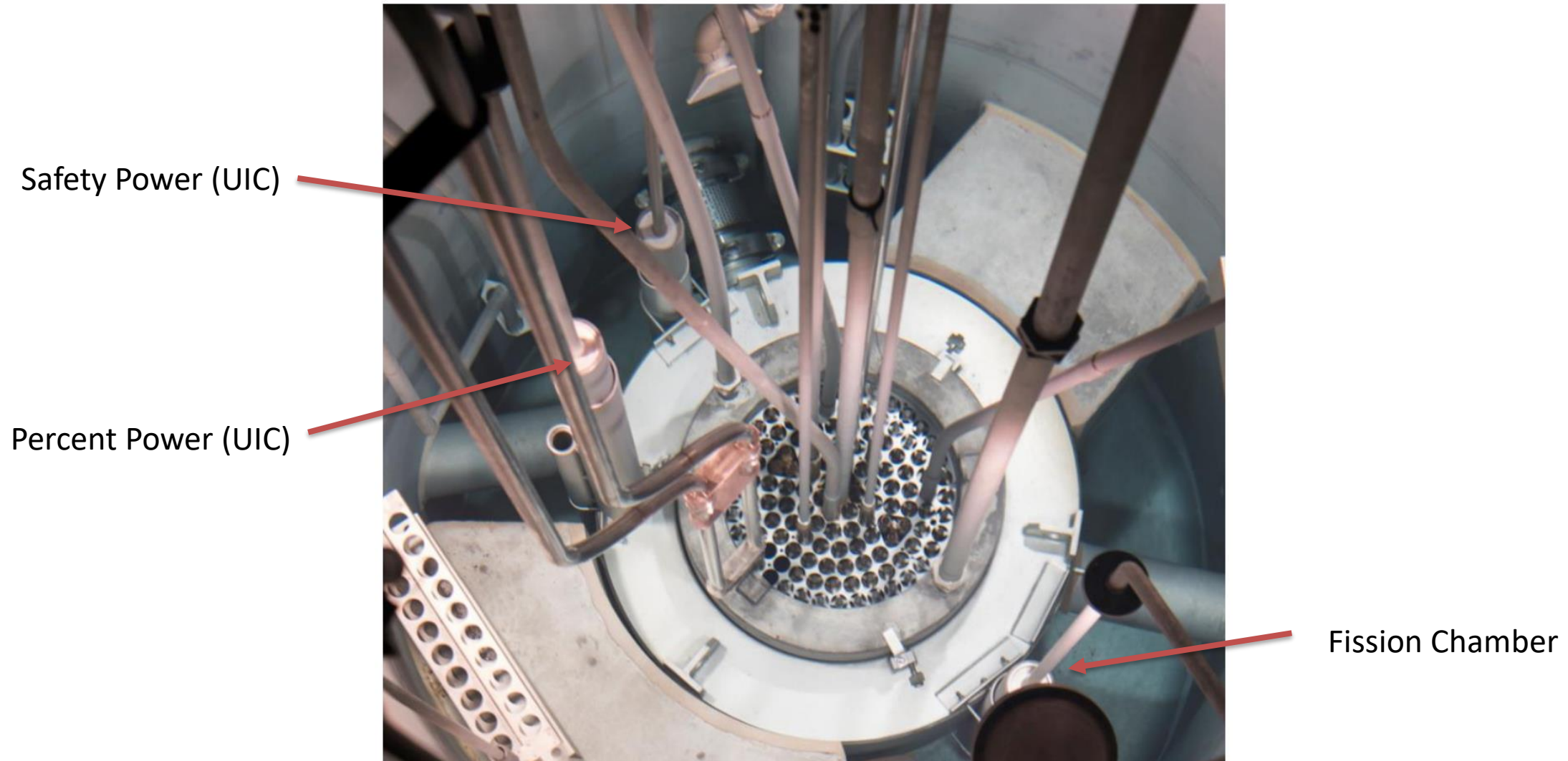
What if...

- Results raised the question: Can the OSTR be operated such that total core power exceeds the licensed steady-state power limit of $1.1 \text{ MW}_{\text{th}}$, despite the reactor power measuring channels reading $1.0 \text{ MW}_{\text{th}}$?
- Could be possible due to localized power peaking in regions furthest from the detectors.

Power Detector Placement



Oregon State University
College of Engineering





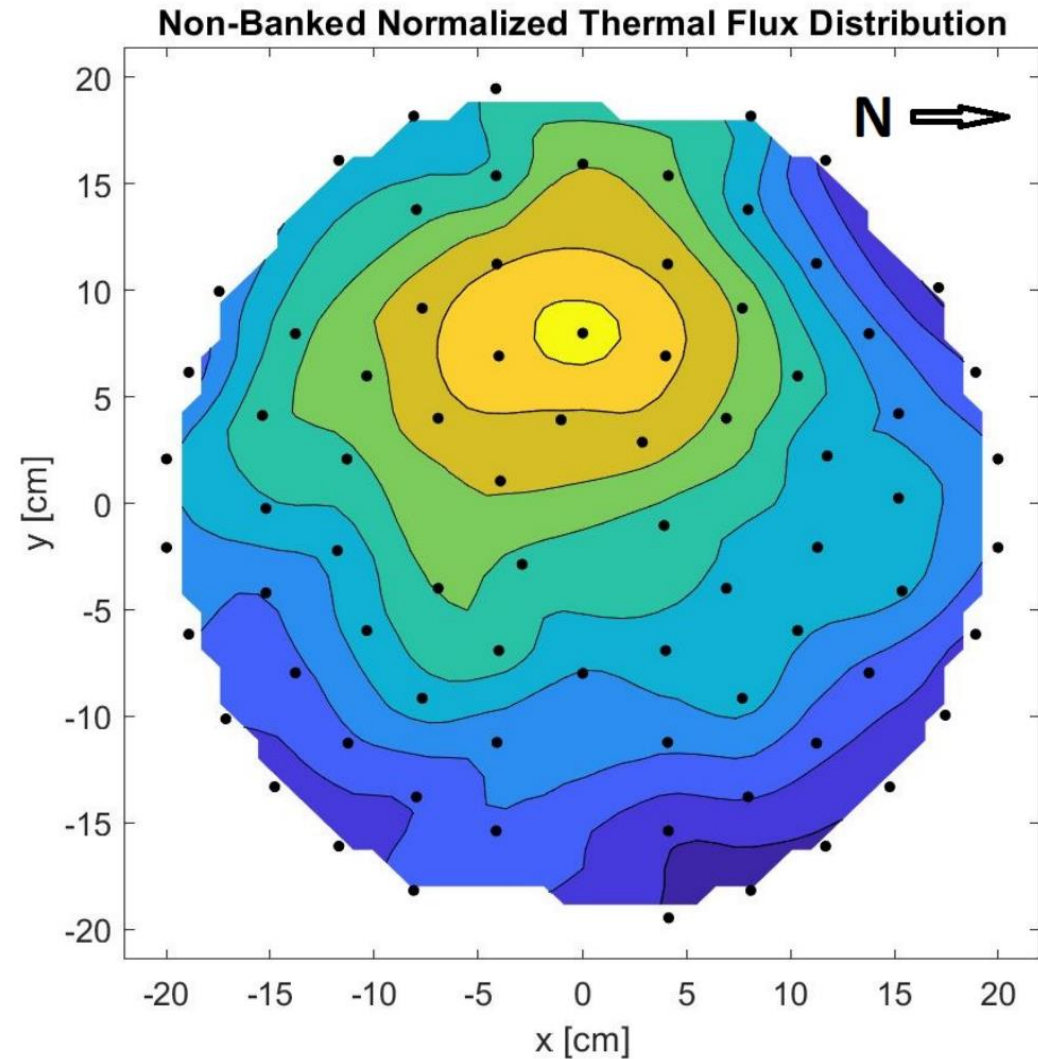
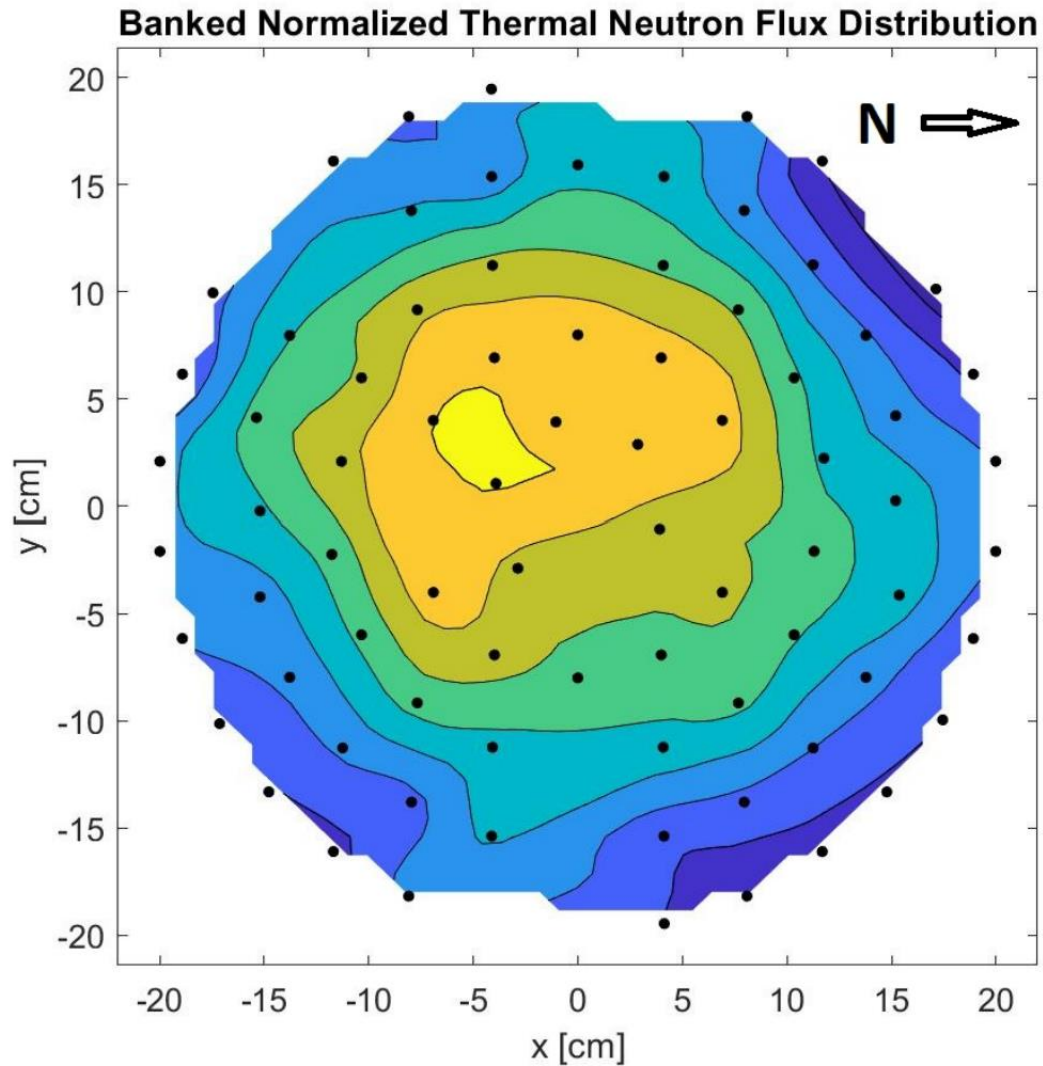
OSTR Power Detectors

- Calibrated using a calorimetric method at $1.0 \text{ MW}_{\text{th}}$ with rods banked at $\sim 69\%$ withdrawn.
- The detectors are physically moved until response on measuring channel instruments matches calorimetric calculation.
- Detectors are calibrated to a flux distribution that exists at banked control rod heights at $1.0 \text{ MW}_{\text{th}}$.

Flux Distribution



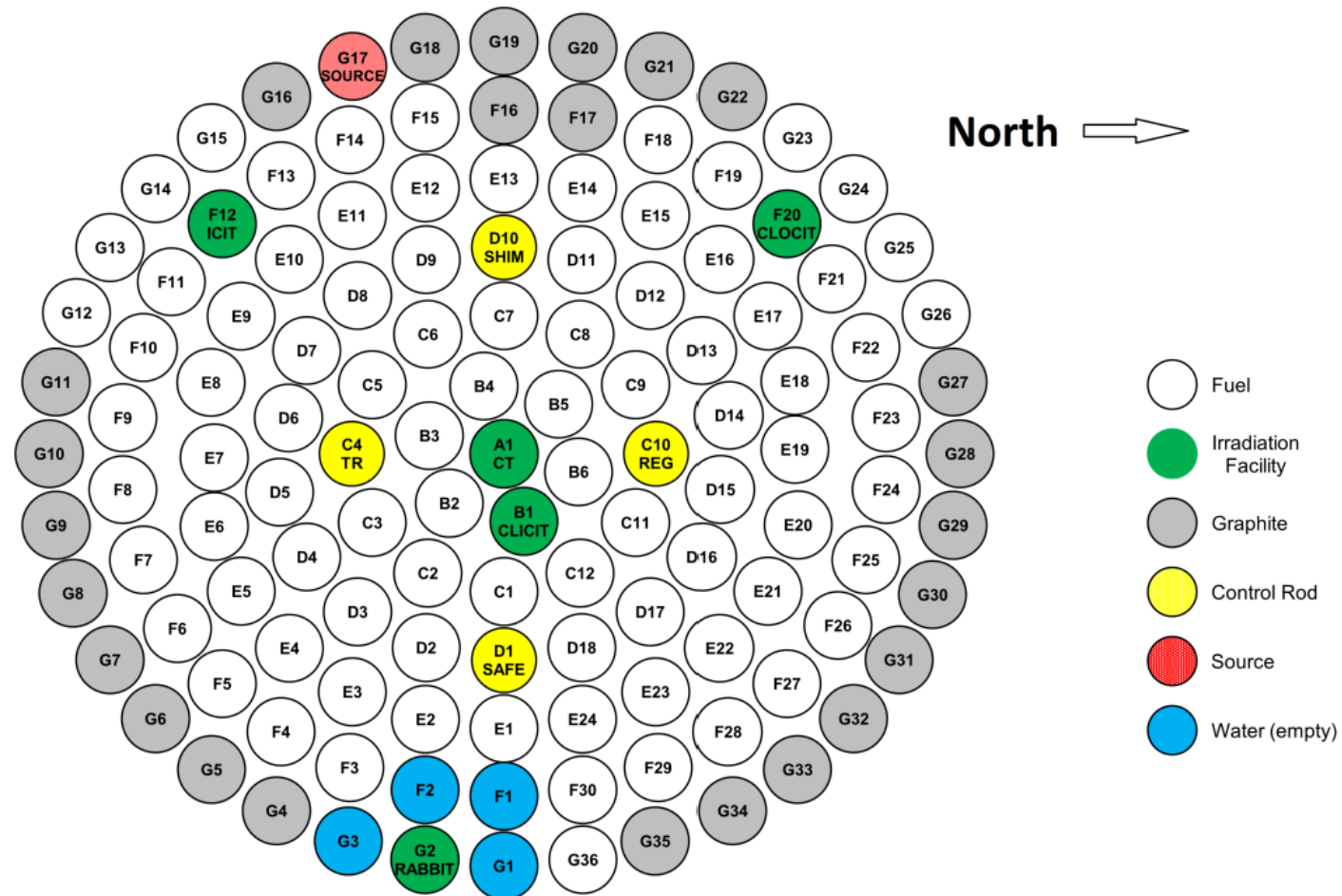
Oregon State University
College of Engineering



CLICIT Core Configuration



Oregon State University
College of Engineering





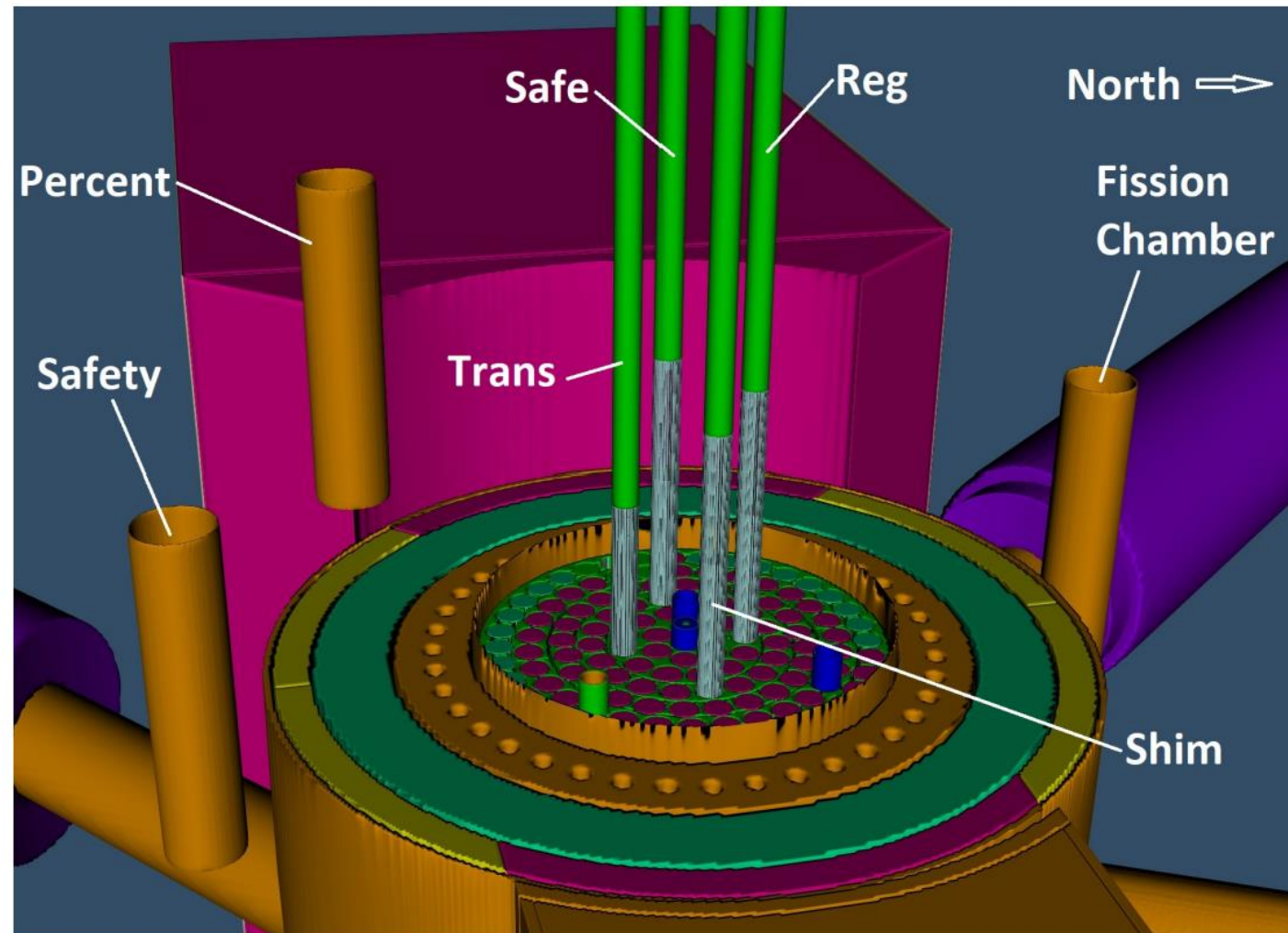
Methods

- Use OSTR MCNP Model to compare detector “response” in the banked 1.0 MW_{th} and skewed 1.06 MW_{th} configurations with different multiplier cards.
- Thermal flux tally on detector can volume. Thermal flux proportional to detector response.
- If detector tally is similar (within either’s relative error) in both situations it would suggest it is possible the detector cannot distinguish between a total core power of 1.0 MW_{th} and 1.06 MW_{th} for the different core flux distributions.

OSTR Model



Oregon State University
College of Engineering





Methods

- For banked configuration, all rods withdrawn to $\sim 69\%$, 1.0 MW_{th} multiplier card used.
- For skewed configurations, the shim rod is fully withdrawn and other three incrementally withdrawn until a keff of approximately 1.0 is achieved. 1.06 MW_{th} multiplier card used.
- Assumptions: fuel temp same in both situations (600 K), power defect between 1.0 and 1.06 MW_{th} negligible.



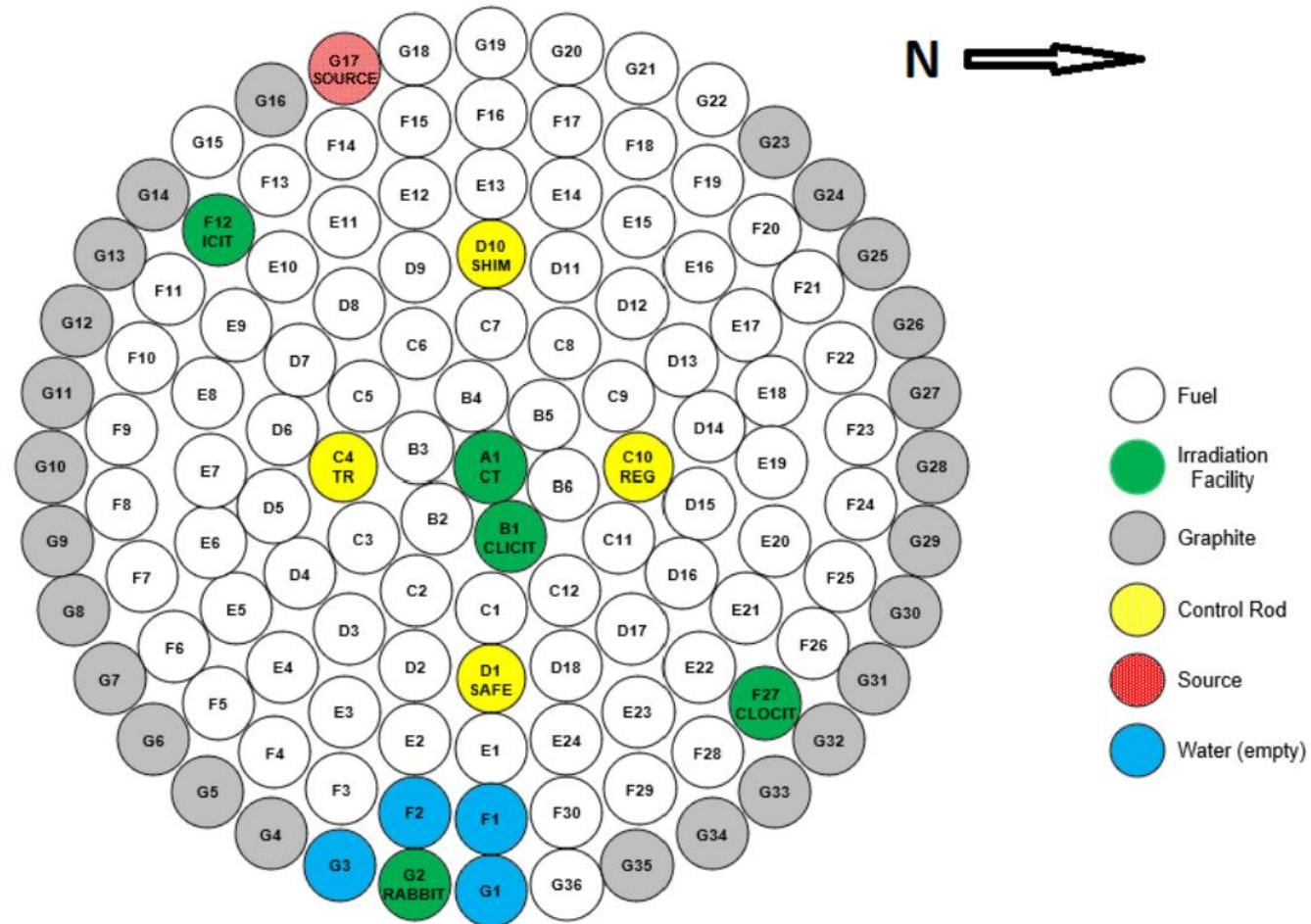
Alternative Core Concept

- “Are there core configurations that are worse than others for this phenomenon?”
- An alternative core configuration was proposed in hopes of maximizing the peaking effect in the NW region of the core.
- Moved the cadmium-lined irradiation tube from F20 to F24 and replaced graphite elements in the western region with fuel from the North and South.

Alternative Core Configuration

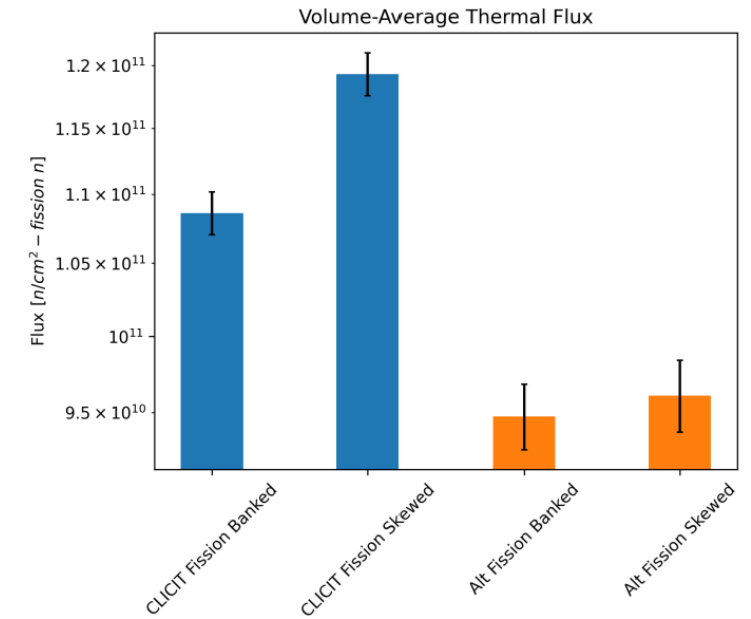
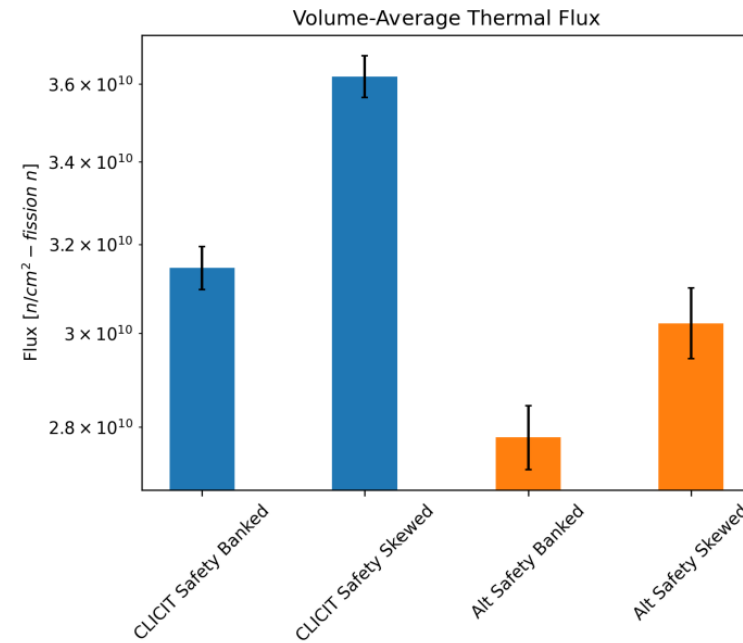
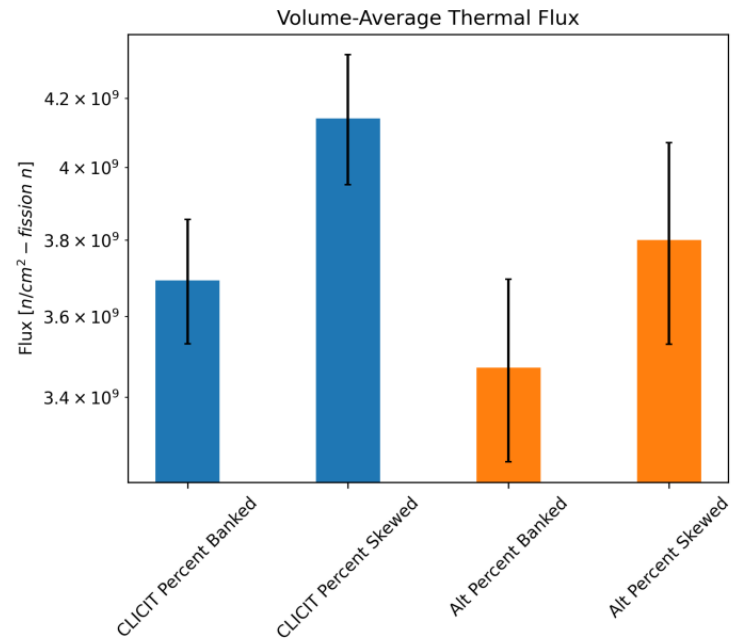


Oregon State University
College of Engineering





Results





Conclusions

- The alternate core results suggest it may be possible to unknowingly violate a license limit by operating the OSTR in an extremely tilted manner, close to the SCRAM set-points, in certain core configurations.
- However, a power detector calibration would take place with any core configuration change.
- While these results are interesting, they are perhaps irrelevant in practical terms because calibrations are performed following configuration changes.



Conclusions

- However, results demonstrate why it is important to perform calibrations with any core configuration change.
- Results show the importance of the fact that, in the calorimetric method for calibrating power detectors, the calibration process is calibrating power detectors to a neutron flux distribution that existed during that process.
- Illustrates why operating in banked control configurations consistently is good operating practice.



Conclusions

- Perhaps the most importantly, Results suggest that the current OSTR CLICIT core is resilient to violating its steady-state license limit 1.0 MW_{th} if operated in this manner.
- This may be due to diverse detector placement around the core.
- Of interest for future study is the effect these tilted operating configurations have on assemblies where all reactor power detectors are located on one side of the core.



Oregon State University
College of Engineering

Questions?